

3M Science.
Applied to Life.™

3M™ Adaptic™ Non-Adhering Dressing

What is it?

Adaptic Dressing is a primary dressing made of knitted cellulose acetate fabric and impregnated with a specially formulated petrolatum emulsion. It is designed to help protect the wound while preventing the dressing from adhering to the wound.

What is it for?

Adaptic Dressing is a primary wound contact layer for the management of a variety of wounds (see instructions for use for full details) where adherence of secondary dressing is to be prevented.

How to apply:

Refer to the instructions for use. Select a size of Adaptic Dressing that is larger than the wound. Always wash your hands before and after dressing change. Prepare the wound according to appropriate wound management protocol. Ensure skin surrounding the wound is dry. Remove the Adaptic Dressing from the pouch.

How often to apply:

Adaptic Dressing may be left in place for several days depending on the amount of exudate.

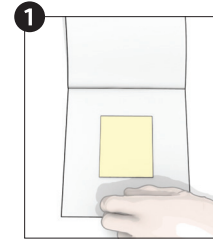
Frequently asked questions:

Can Adaptic Dressing be left in place with only the secondary dressing changed?

Yes. Depending on the wound conditions, it may be possible to keep Adaptic Dressing in place and only change the secondary dressing.

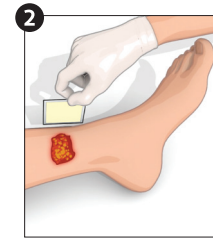


Dressing preparation



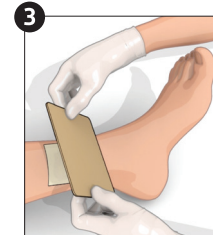
If needed **Adaptic** Dressing may be cut to size with sterile scissors.

Dressing application



1. Place **Adaptic** Dressing directly over the wound and smooth in place around the wound.
2. If more than one piece of **Adaptic** Dressing is required, ensure dressings overlap, to avoid secondary dressing adherence to the wound. Overlap should be minimized to prevent occlusion of holes.

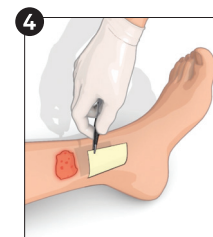
Secondary dressing application



Cover **Adaptic** Dressing with a secondary dressing such as 3M™ Tegaderm™ Foam Non Adhesive dressing. Choose the secondary dressing based on the level of exudate.

Apply any secondary cover or retention/compression bandage.

Dressing change and removal



Dressing change frequency is dictated by good wound care practice and will depend on the condition of the wound.

Adaptic Dressing may be left in place for several days depending upon amount of exudate.

Note: This document is intended for patient self-care as guided by their HCP and is not intended to replace the Instructions for Use.

Note: Specific indications, contraindications, warnings, precautions and safety information exist for these products and therapies. Please consult a clinician and product instructions for use prior to application. Rx only.

3M Company
2510 Conway Ave
St. Paul, MN 55144 USA

Phone 1-800-275-4524 (NPWT products)
1-800-228-3957
Web 3M.com/medical

© 2021 3M. All rights reserved. 3M and the other marks shown are marks and/or registered marks. Unauthorized use prohibited. 70-2013-1042-5 PRA-PM-US-03170 (09/21)